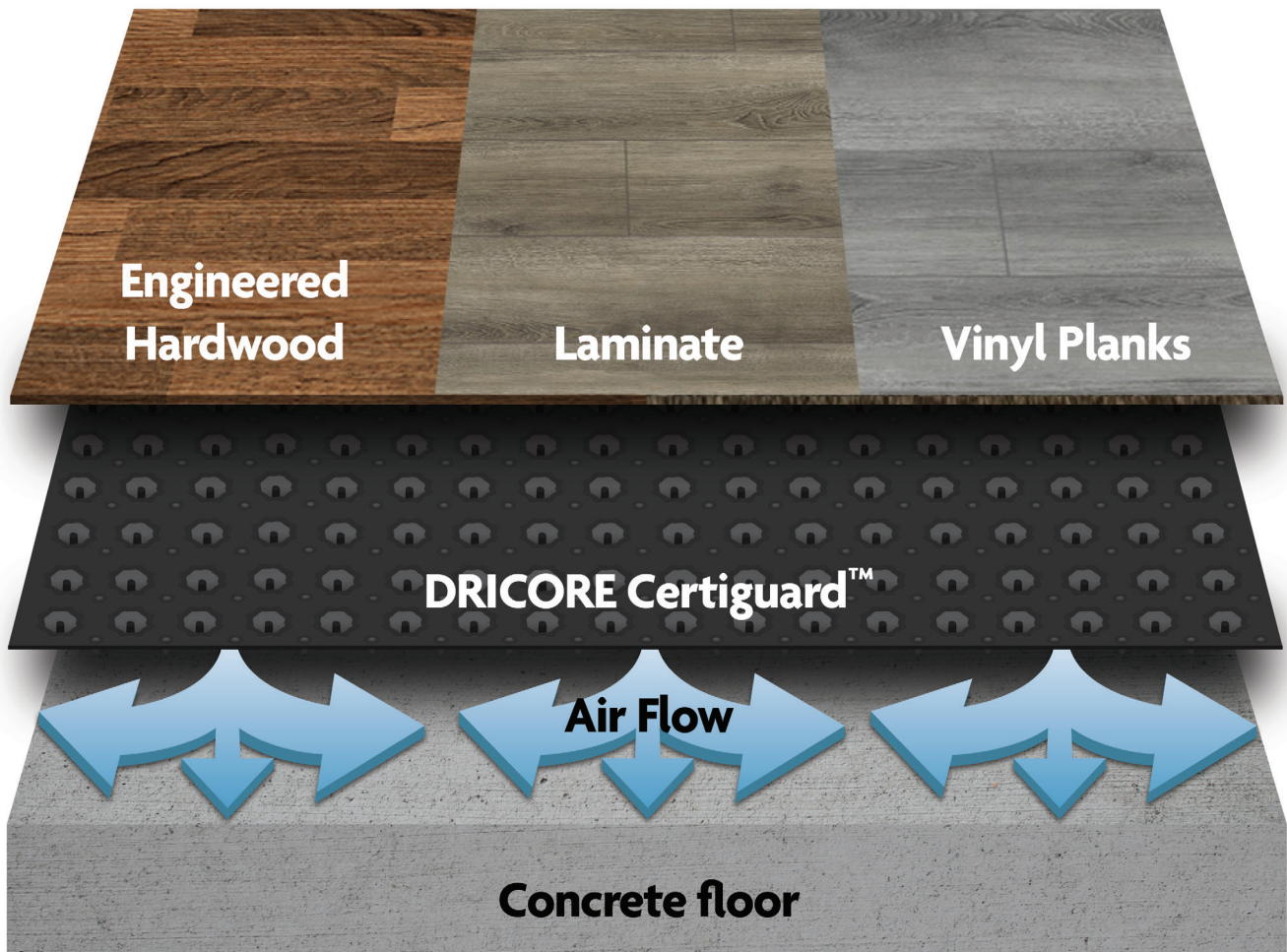


DRICORE
Certiguard™

INSTALLATION

INSTRUCTIONS



DRICORE CERTIGUARD™ INSTALLATION INSTRUCTION MANUAL
For any questions or concerns, please contact us at 1-866-767-6374

TOOLS REQUIRED



Tape Measure

Utility Knife

Knee Pad

Self-levelling compound (if required)

Straight Edge for Knife Guide

FOR USE WITH

- All luxury vinyl tile (LVT) and luxury vinyl plank (LVP) flooring with a click-lock system and a **core thickness of more than 5mm***.
- All free-floating laminate flooring with a **core thickness greater than 5mm***.
- All free-floating engineered hardwood floors with a **minimum thickness of 12mm***.

INSTALLATION PROCESS

- 1** Sweep the floor clean of any debris and dirt. If possible, vacuum as well to remove finer particles of debris.



- 2** Repair any cracks in the concrete floor with a good quality concrete crack repair product such as DRICORE™ PRO Concrete Repair.

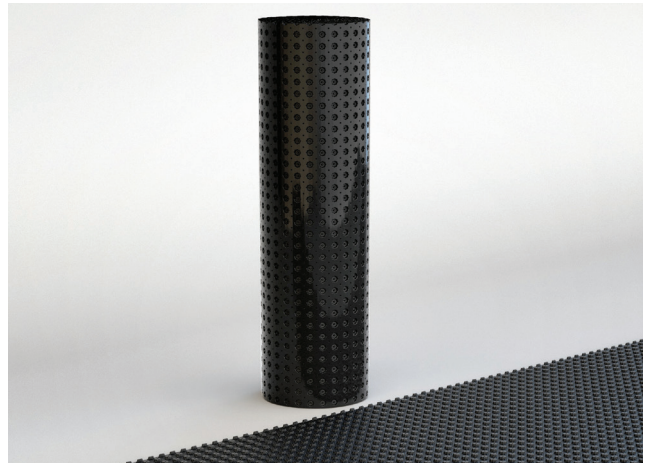


- 3** **IMPORTANT:** Check the floor for low spots. If there is a height difference of more than 3/32" over 6', then fill with self levelling cement.

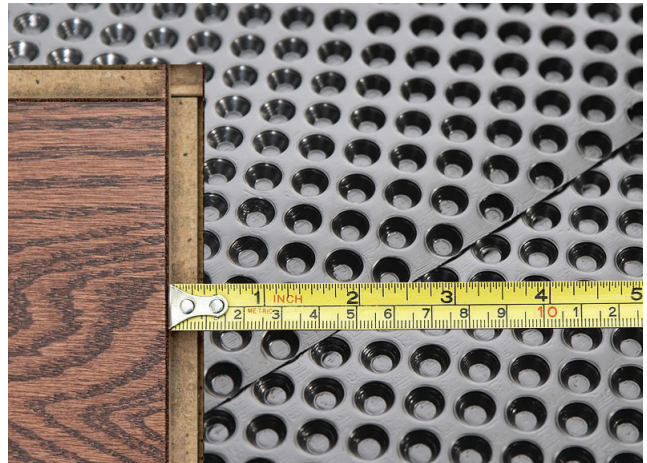
For minor variations, (shorter than 3/32") use wooden/plastic shims. Place shims above the DRICORE Certiguard™ and below the finished floor.



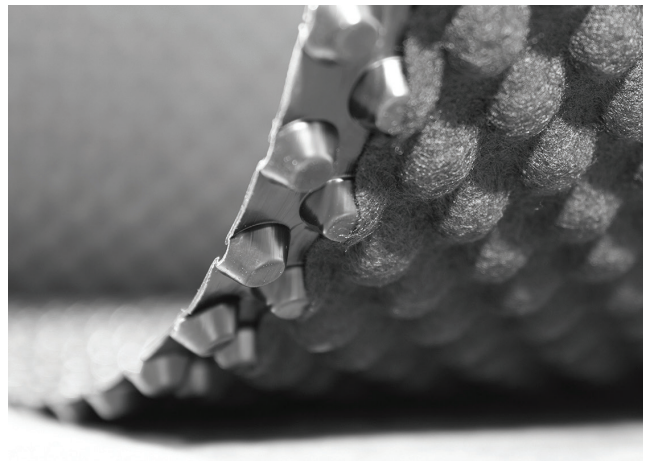
4 Once the floor is fully prepped and repair products are fully cured, you can then install the underlayment.



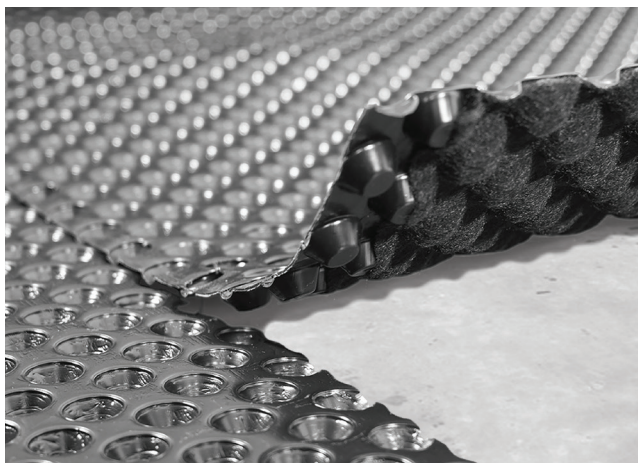
5 Leave a 1/4" of gap at all perimeter locations and obstacles such as support posts and stairs.



6 Unroll your first row with dimples facing down and lay the roll in the opposite direction that you will be installing your finished flooring product. This will reduce the odds of a floor seam falling directly on top of an underlayment seam.



7 Unroll the second row and overlap the two rows where the woven backer is not present. When coming to the end of a roll and starting a second roll to finish a row, the roll width seam cannot be overlapped and should be butted together and taped using a vapour barrier rated tape.



8 Repeat this for each additional row until the underlayment install is complete. You will likely need to trim the width of the last row to fit. Remember to allow for the 1/4" gap at the wall.



9 Once the underlayment is fully installed, follow the finished floor manufacturers instructions for installing the finished floor. Always carefully follow any recommendations for acclimation of the finished floor product.

