

ACHIEVING R20+ WITH SMARTWALL

DRiCore SMARTWALL® Makes it Easy

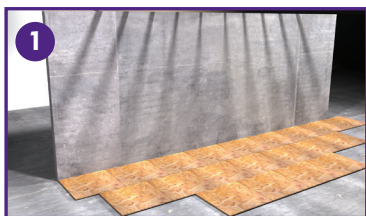
Depending on your local building code requirements you may need to increase the R-Value of the SMARTWALL system (see chart below).

EPS (Expanded Polystyrene)	SMARTWALL	TOTAL R-VALUE
1" (R4)	R17.4	R21.4
1.5" (R6)	R17.4	R23.4
2" (R8)	R17.4 </td <td>R25.4</td>	R25.4

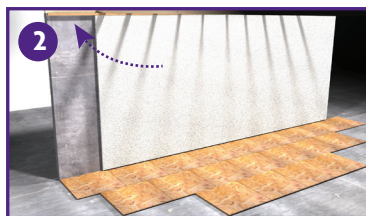
These combinations comply with the building codes across North America and mean increased energy savings for your home.

Note: Follow the EPS (Expanded Polystyrene) manufacturers installation instructions for fastening to the concrete wall.

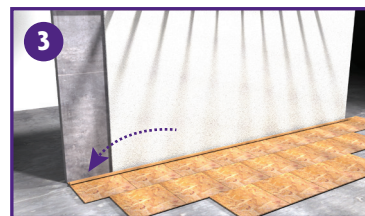
Easy Installation



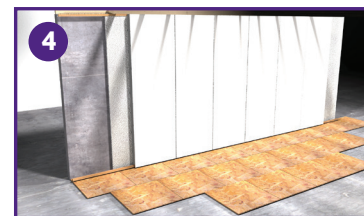
- First install DRiCore® Subfloor



- Using 2" x 2" lumber attach your top track first to your floor joists.
- Next, fasten EPS (Expanded Polystyrene) boards to the concrete wall. (E.g. Use 4 to 6 concrete nails and washers per board as needed.)



- Using 2" x 2" lumber attach your track to your DRiCore® Subfloor leaving a 1/2" space at each bottom corner of the room.
- Offset track by 2 3/8" from the front of the top track to the front of the bottom track.



- Install DRiCore SMARTWALL® panels.



- Use DRiCore® Patch pro to fill the micro bevel seams and complete your wall.

