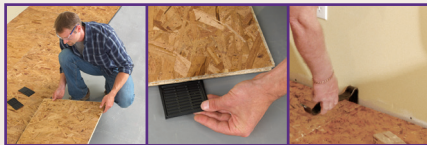


## HOW TO INSTALL DRICORE® SUBFLOOR?



SCAN THIS QR CODE TO CHECK OUR INSTALLATION VIDEOS

### How many DRICORE® panels and leveling kits do I need?

Use this simple formula to estimate the number of panels required for your project.

$$\text{Room square footage} \div 3.3 = \text{Number of panels required}$$

Typically one leveling kit is used for every 60 panels.

Scan this QR Code to try our project calculator



Endorsed by the following manufacturers:



### HAVE MORE QUESTIONS?

Contact DRICORE® customer service at  
1-866-767-6374  
(9am-5pm ET - Monday to Friday)  
or visit [www.dricore.com](http://www.dricore.com)

© AGT Products (IP) Inc. DRICORE is a registered trademark of AGT Products (IP) Inc. used under license by AGT Products Inc. and AGT Products (USA) Inc. Canada Patent 2315462, United States Patent 6918215. Manufacturer's endorsements is for below grade carpet installation 2009-2011

# DRICORE®

Don't build without it.

# WHEN FINISHING A BASEMENT, MAKE SURE IT'S REALLY FINISHED.



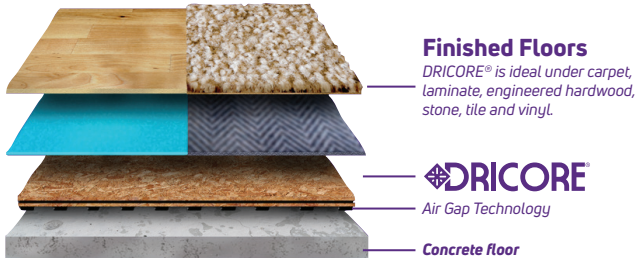
[www.dricore.com](http://www.dricore.com)

## WHY YOU NEED DRICORE® SUBFLOOR

Concrete continually releases moisture and if trapped this can lead to mold. DRICORE® is the first and most important step towards creating a new living space as warm and comfortable as any other space in your home. DRICORE® is the one-step engineered subfloor solution that is specifically designed for concrete. The raised moisture barrier allows for air flow, provides warmth and protects your finished floors.

## HOW THE DRICORE® SUBFLOOR TECHNOLOGY WORKS

DRICORE® Subfloor panels have been designed with air gap technology to keep basement floors dry, warm and comfortable throughout the entire year. The air gap encourages constant air flow and evaporation/reabsorption of surface moisture emitted from your basement concrete floor.



## BENEFITS OF DRICORE® SUBFLOOR

- ▶ Air gap technology promotes air flow to control moisture
- ▶ Provides warmer floors
- ▶ Saves on heating bills
- ▶ Can be used on any finished flooring
- ▶ Tongue and groove design provides fast and easy installation
- ▶ Strong enough to stand up to heavy furniture
- ▶ Cushions finished floors



## WHICH SUBFLOOR IS RIGHT FOR YOU?

### PRODUCT COMPARISON

This comparison table is intended to show the different features and benefits of our DRICORE® subfloor panels.

	SUBFLOOR	SUBFLOOR R+
<b>R-VALUE</b>	1.7	3
<b>TEMPERATURE</b>	3.2 °C / 6 °F	5.6 °C / 10.6 °F
<b>AIR FLOW</b>	Yes	Yes
<b>HEIGHT</b>	7/8"	1"
<b>TOP</b>	OSB	OSB
<b>BOTTOM</b>	High Density Plastic	Foam
<b>WEIGHT</b>	7 Lbs	6.4 Lbs
<b>SIZE</b>	23.25" x 23.25"	23.25" x 23.25"
<b>WEIGHT* SUPPORT (PER SQ FT.)</b>	6,642 Lbs	3,153 Lbs
<b>WARRANTY</b>	25 Years	25 Years
<b>FINISHED FLOORING</b>	Laminate, Hardwoods, Carpet, Vinyl, Tile	Laminate, Hardwood, Carpet, Vinyl, Tile

\* Tested by an independent lab

- Subfloor R+ is only available online at select retailers

- Check with manufacturer for below grade installation of hardwood

## DRICORE® LEVELING KITS

The leveling shims have been designed to slide under DRICORE® panels, to adjust for uneven areas on your concrete floor that are less than 1/4".

