

# ACHIEVING R20+ WITH SMARTWALL

## DRICORE SMARTWALL® Makes it Easy

Depending on your local building code requirements you may need to increase the R-Value of the SMARTWALL system (see chart below).

FOAM INSULATION	SMARTWALL	TOTAL R-VALUE
1" (R5) Extruded Polystyrene (XPS)	R15.1	R20.1
1.5" (R6) Expanded Polystyrene (EPS)	R15.1	R21.1
2" (R8) Expanded Polystyrene (EPS)	R15.1	R23.1

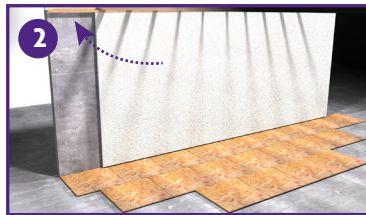
These combinations comply with the building codes across North America and mean increased energy savings for your home.

*Note: Follow the EPS (Expanded Polystyrene) manufacturers installation instructions for fastening to the concrete wall.*

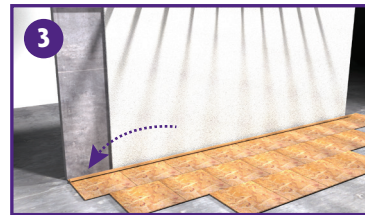
## Easy Installation



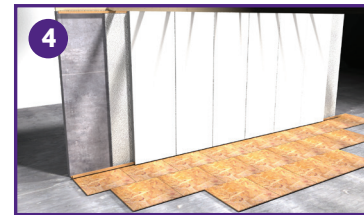
- First install DRICORE Subfloor®



- Using 2" x 2" lumber attach your top track first to your floor joists.
- Next, fasten EPS (Expanded Polystyrene) boards to the concrete wall. (E.g. Use 4 to 6 concrete nails and washers per board as needed.)



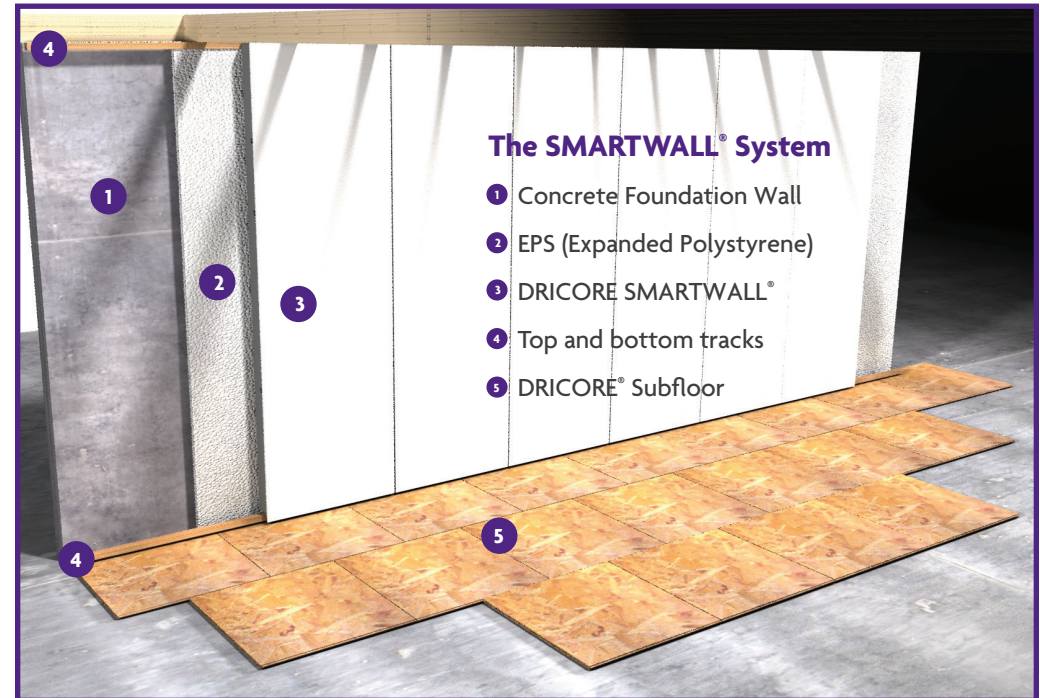
- Using 2" x 2" lumber attach your track to your DRICORE® Subfloor leaving a 1/2" space at each bottom corner of the room.
- Offset track by 2 3/8" from the front of the top track to the front of the bottom track.



- Install DRICORE SMARTWALL® panels.



- Use DRICORE® Patch pro to fill the micro bevel seams and complete your wall.



### The SMARTWALL® System

- 1 Concrete Foundation Wall
- 2 EPS (Expanded Polystyrene)
- 3 DRICORE SMARTWALL®
- 4 Top and bottom tracks
- 5 DRICORE® Subfloor